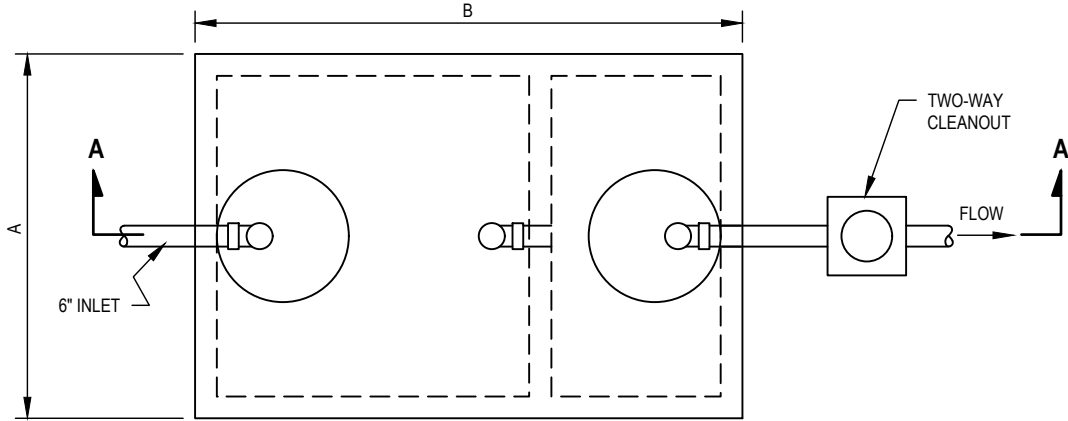


# GREASE INTERCEPTOR (TYPICAL: 750 GALLON MINIMUM)

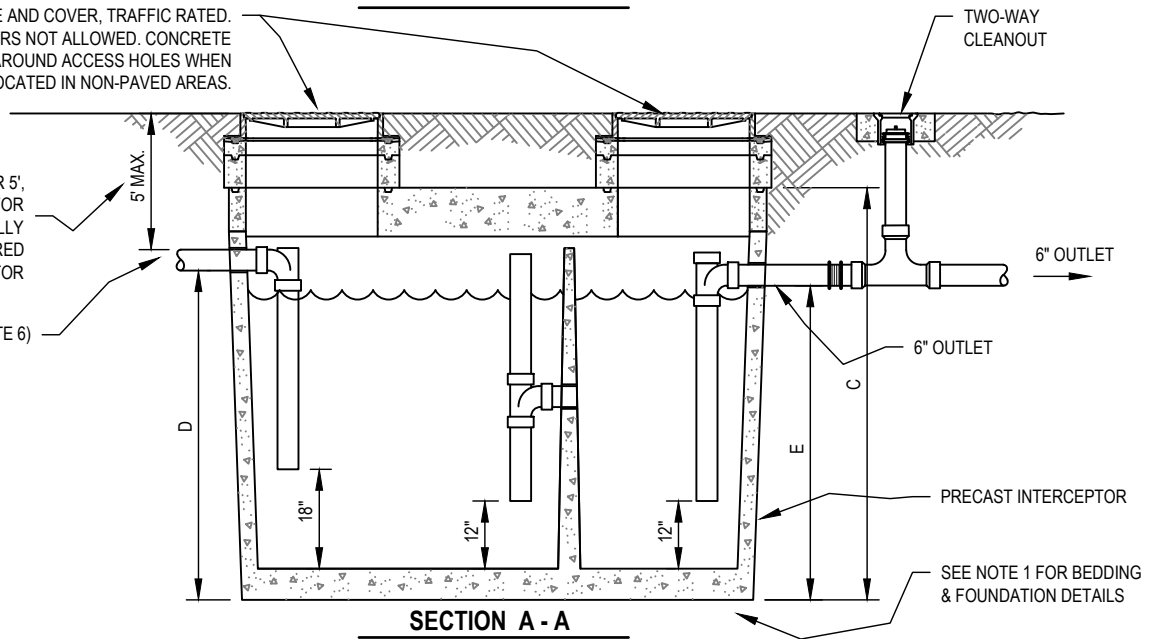


**PLAN VIEW**

24" CAST IRON FRAME AND COVER, TRAFFIC RATED.  
PLASTIC COVERS NOT ALLOWED. CONCRETE COLLAR REQUIRED AROUND ACCESS HOLES WHEN INTERCEPTOR IS LOCATED IN NON-PAVED AREAS.

NOTE:  
FOR DEPTHS OVER 5',  
SPECIAL APPROVAL FOR  
SPECIFICALLY  
ENGINEERED  
INTERCEPTOR

6" INLET (SEE NOTE 6)



**SECTION A - A**

LIQUID CAPACITY GALLONS	WIDTH "A"	OVERALL LENGTH "B"	TANK HEIGHT "C"	INLET "D"	OUTLET "E"	MINIMUM EXCAVATION WIDTH	MINIMUM EXCAVATION LENGTH	DEPTH OF BURY
750	4'-0"	8'-1"	6'-0"	5'-0"	4'-9"	5'-0"	9'-1"	1' TO 6'
1000	5'-1"	8'-2"	6'-0"	5'-0"	4'-9"	6'-1"	9'-2"	1' TO 6'
1200	5'-9"	8'-6"	6'-0"	5'-0"	4'-9"	6'-9"	9'-6"	1' TO 6'
1500	5'-7"	10'-8"	6'-0"	5'-0"	4'-9"	6'-7"	11'-8"	1' TO 6'

**NOTE:**

1. INTERCEPTOR SHALL BE PLACED ON A MINIMUM OF 6" TYPE I BEDDING MATERIAL, COMPACTED TO 95% RELATIVE COMPACTION.
2. ALL ELEVATIONS SHALL BE SUBMITTED FOR REVIEW TO DISTRICT PRIOR TO INSTALLATION.
3. GREASE INTERCEPTORS ARE NOT INTENDED FOR THE INTRODUCTION OF DOMESTIC SEWAGE. LOCATION AND TRIBUTARY DISCHARGE SOURCES SHALL BE APPROVED BY DISTRICT PRIOR TO INSTALLATION.
4. INTERCEPTOR LOCATED IN AN AREA SUBJECT TO TRAFFIC MUST BE H-20 TRAFFIC RATED.
5. NON-PRECAST INTERCEPTORS ACCEPTED UPON SPECIAL APPROVAL.
6. ALL INLET AND OUTLET PIPES SHALL BE 6" DIAMETER MINIMUM.
7. THE USE OF CAST IRON SOIL PIPE FOR GREASE INTERCEPTOR APPLICATIONS IS PROHIBITED.
8. LARGER GREASE INTERCEPTORS WILL BE APPROVED ON A CASE-BY-CASE BASIS.

## VALLEJO FLOOD & WASTEWATER DISTRICT

### GREASE INTERCEPTOR

STANDARD DETAIL

# SS-21



SCALE:

NONE

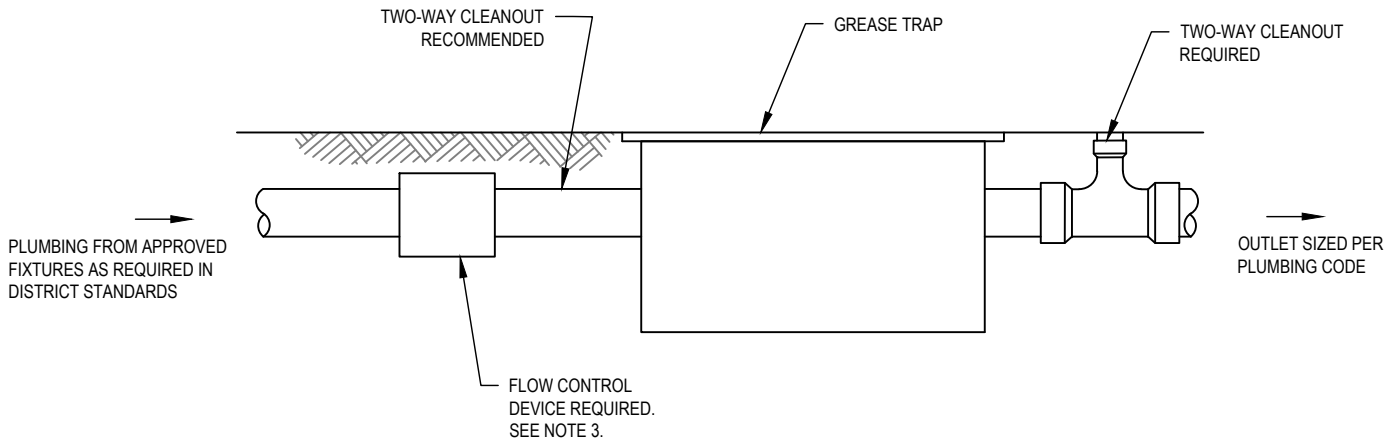
APPROVED:

*Mark Tomko*  
MARK TOMKO, DIRECTOR OF ENGINEERING C59700

DATE:

JULY 2020

**USE OF GREASE TRAP REQUIRES A WAIVER.  
YOU MUST BE APPROVED BY THE DISTRICT  
BEFORE YOU CAN USE THIS DETAIL.**



- NOTE:
1. GREASE TRAP SHALL NOT BE MADE OF STEEL OR STAINLESS STEEL.
  2. MINIMUM SIZE OF GREASE TRAP IS 35 MGD AND 70 LBS.
  3. AN EXTERNAL FLOW CONTROL DEVICE IS REQUIRED IF INTERNAL FLOW CONTROL IS NOT INCLUDED AS PART OF THE TRAP. REMOVABLE OR ADJUSTABLE FITTINGS ARE PROHIBITED ON AN EXTERNAL FLOW CONTROL DEVICE. REFER TO LOCAL PLUMBING CODE FOR VENT REQUIREMENTS ON EXTERNAL FLOW CONTROL DEVICE.
  4. REFER TO LOCAL PLUMBING CODE FOR VENTING, FIXTURES, AND TRAP REQUIREMENTS.

**VALLEJO FLOOD & WASTEWATER DISTRICT**

**GREASE TRAP**

STANDARD DETAIL

**SS-22**

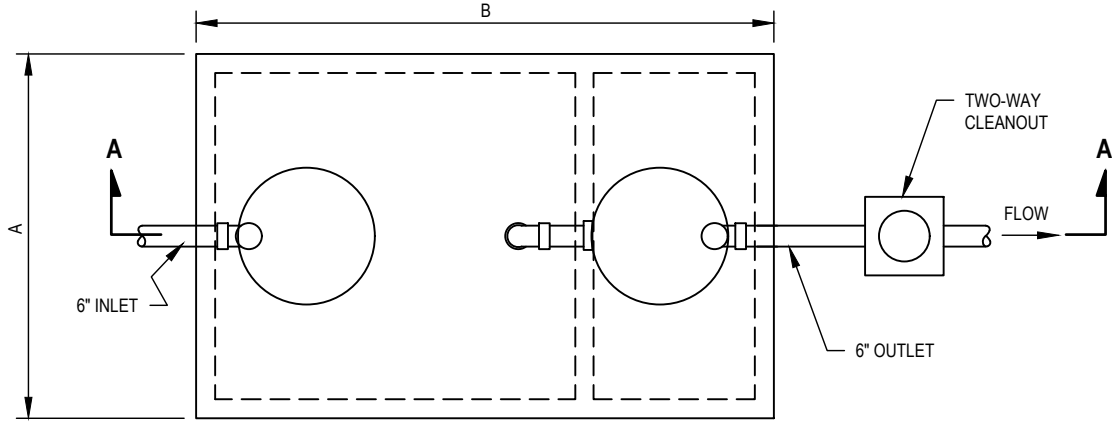


SCALE:  
**NONE**

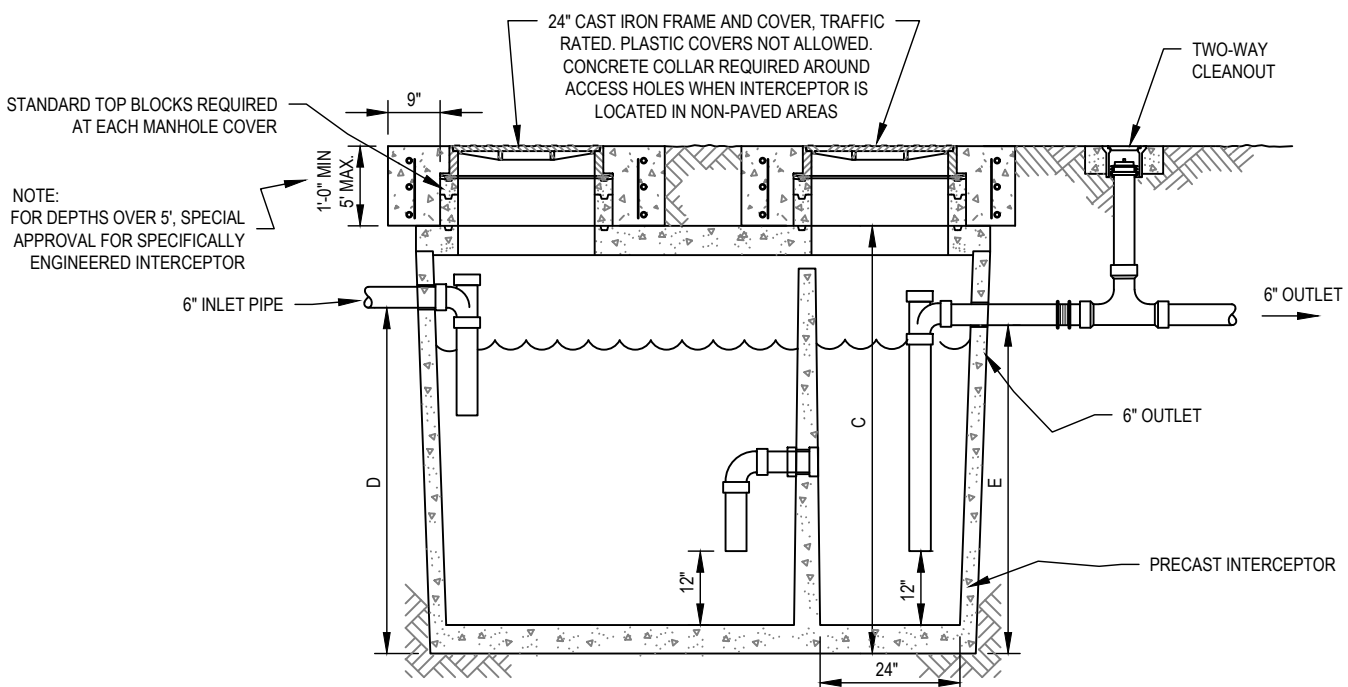
APPROVED: *[Signature]*  
MARK TOMKO, DIRECTOR OF ENGINEERING C59700

DATE:  
**JULY 2020**

# SAND-OIL INTERCEPTOR (TYPICAL: 320 GALLON MINIMUM)



**PLAN VIEW**



**SECTION A - A**

LIQUID CAPACITY GALLONS	DIM "A"	DIM "B"	DIM "C"	DIM "D"	DIM "E"	MINIMUM EXCAVATION WIDTH	MINIMUM EXCAVATION LENGTH	DEPTH OF BURY
320	3' - 0"	7' - 0"	4' - 6"	3' - 7"	3' - 4"	4' - 0"	8' - 0"	1' TO 8'
500	4' - 0"	6' - 0"	5' - 10"	4' - 10"	4' - 7"	5' - 0"	7' - 0"	1' TO 6'
750	4' - 0"	8' - 1"	6' - 0"	5' - 0"	4' - 9"	5' - 3"	9' - 1"	1' TO 6'
1000	5' - 1"	8' - 2"	6' - 0"	5' - 0"	4' - 9"	6' - 4"	9' - 2"	1' TO 6'
1200	5' - 9"	8' - 6"	6' - 0"	5' - 0"	4' - 9"	7' - 0"	9' - 6"	1' TO 6'
1500	5' - 7"	10' - 8"	6' - 0"	5' - 0"	4' - 9"	6' - 10"	11' - 8"	1' TO 6'
2000	4' - 11"	15' - 11"	6' - 0"	5' - 0"	4' - 9"	5' - 11"	16' - 11"	1' TO 6'
2500	5' - 9"	16' - 10"	6' - 0"	5' - 0"	4' - 9"	6' - 9"	17' - 10"	1' TO 5'
3000	5' - 9"	16' - 10"	6' - 9"	5' - 9"	5' - 6"	6' - 9"	17' - 10"	1' TO 5'
4000	7' - 8"	16' - 7"	6' - 9"	5' - 6"	5' - 3"	8' - 8"	17' - 7"	1' TO 5'
5000	7' - 8"	16' - 7"	7' - 11"	6' - 9"	6' - 6"	8' - 8"	17' - 7"	1' TO 4'

- NOTE:
- INTERCEPTOR SHALL BE PLACED ON A MINIMUM OF 6" TYPE I BEDDING MATERIAL, COMPACTED TO 95% RELATIVE COMPACTION.
  - ALL ELEVATIONS SHALL BE SUBMITTED FOR REVIEW TO DISTRICT PRIOR TO INSTALLATION.
  - INTERCEPTOR LOCATED IN AN AREA SUBJECT TO TRAFFIC MUST BE H-20 TRAFFIC RATED.
  - NON-PRECAST INTERCEPTORS ACCEPTED UPON SPECIAL APPROVAL.
  - ALL INLET AND OUTLET PIPES SHALL BE 6" DIAMETER.

## VALLEJO FLOOD & WASTEWATER DISTRICT

### SAND-OIL INTERCEPTOR

STANDARD DETAIL

# SS-23



SCALE: NONE

APPROVED: *[Signature]*  
MARK TOMKO, DIRECTOR OF ENGINEERING C59700

DATE: JULY 2020